

HARDY 62



HARDY 62 - Specifications

Main Dimensions (Approx.)

| | |
|---|---------|
| Length (hull) | 19.75 m |
| Beam | 5.43 m |
| Draft | 1.8m |
| Height above waterline (mast down) | 5.8 m |
| Dry weight | 43 t |
| Fuel capacity (2 stainless steel tanks) | 3540 lt |
| Reserve fuel (2 stainless steel tanks) | 3560 lt |
| Water capacity (stainless tank) | 1000 lt |

Performance (approx.)*

| | |
|------------------|----------------|
| Maximum speed | 25 knots |
| Cruising speed | 15 to 20 knots |
| Fuel consumption | TBC |
| Range | TBC |

*Assumes reasonable weather, normal loading and that the boat is clean underwater

HARDY 62

ACCOMMODATION

Mid Stateroom

- King-sized double bed with material headboard.
- Extensive lockers and drawer units.
- Dressing table with mirrors and suitable lighting.
- Optional TV built into forward bulkhead.
- En-suite heads with separate shower compartment.
- Electric toilet and washbasin set in dedicated moulded unit.
- Carpet and curtains throughout and where necessary.

Third cabin

- 2 full length twin berths
- Hanging locker and storage lockers below berths. Overhead lockers above berths.
- En-suite heads with separate shower compartment and curved sliding door.
- Electric toilet and washbasin set in dedicated moulded unit.
- Carpet and curtains throughout and where necessary.

Larder area

- Dual voltage large fridge and freezer.
- Worktop and storage.
- Hard wearing laminate flooring.

Galley

- Electric 4-burner ceramic hob with extractor fan unit above (option induction hob).
- Electric fan oven.
- Built-in combined microwave and oven.
- Double sink and mixer tap.
- Extensive Corian worktop with optional stainless splash-back.
- Various lockers and drawers.
- General lighting and dedicated lighting above each worktop.
- Hard wearing laminate flooring.

Forward cabin

- Full length and width "V" berths (optional double berth and modified seating area to starboard).
- Large hanging wardrobe and drawers, lockers below the berths and either side below the side decks.
- En-suite heads with separate shower compartment and curved sliding door.
- Electric toilet and washbasin set in dedicated unit.
- Carpet and curtains throughout where necessary.

Lower helm area forward of dining area

- Three heave-compensated fully adjustable helm seats at the raised control position on the starboard side.
- The lower helm position has engine and thruster controls, navigation and communication electronic equipment, an overhead electrical control panel.
- On the starboard side of the bridge deck is an access ladder direct to the flybridge helm position.
- Opening side doors either side giving access to the side decks.
- Hardwearing laminate flooring.
- Heavy duty windscreen wipers.

HARDY 62

Dining area forward of main deck saloon

- Squared seating area for 6 people plus stools for additional people.
- Extending dining table.
- Storage below seating.
- Hard wearing laminate flooring.

Main deck saloon

- Extensive seating area with storage under on the port side.
- Extensive cabinets and storage lockers opposite with built-in TV on a retractable bracket.
- Top entry bottle fridge.
- Glasses locker.
- Bottle locker.
- Access door onto aft deck.
- Carpet and curtains throughout where necessary. Acoustaloy is laid under the carpet over the engine room to reduce noise.

Aft storage room / utility area

- Accessed from aft deck
- This space contains the main vessel utilities and control equipment.
- Compact washing machine and compact condensing tumble dryer.
- Hard wearing laminate flooring.

Crew cabin

- Accessed from aft utility area.
- Single full length berth.
- Hanging locker and storage units.
- En-suite heads with separate shower compartment.
- Manual flush toilet.
- Hard wearing laminate flooring.

Engine room

- Entered by a watertight door from aft utility area containing the main engines, generator, hydraulic systems, main and reserve fuel tanks etc.
- The engine room space is fully ventilated with good headroom and easy access to all machinery units.
- Non-slip aluminium flooring and handrail/guardrails throughout.
- Engine room is soundproofed throughout.

ON DECK

- Teak decking throughout including fwd coach roof.
- Canvas covers to flybridge console and bench seat. Covers to wheelhouse windows and doors.

Wide side decks

- Enclosed by high bulwarks and solid handrails round the whole boat that comply with the MCA Workboat Code.
- Optional side and aft deck concealed lights.
- Lifebuoys with Perry lines either side.
- Hydraulic windlass with chain tension claw on fore deck with local controls, plus controls at both the lower and flybridge helm positions (optional twin windlass with anchors stowed either side of bows via hawser tube).
- 50kg Hall anchor and 60m chain cable.
- Access to chain locker via a deck hatch beside the windlass.
- Opening side gate in bulwarks supplied with one set of removable boarding ladder.

HARDY 62

Aft cockpit

- Moulded seat lockers with seat cushions and backrests along the transom which are also deck lockers.
- Optional canopies to enclose cockpit area.
- Aft control station with control of engines and thrusters.

Large bathing platform

- Accessed via opening gate in transom and stainless steel steps from aft cockpit.
- Teak slats on a stainless platform.
- Extending MOB/ bathing ladder.

Access via steps from aft cockpit

Flybridge

- Console at forward end of flybridge with engine, thruster trim tab and steering controls, plus duplicates of the electronic equipment at the lower helm.
- Three person helm bench seat.
- Seat lockers with removable cushions.
- Hinged mast SS bracketry for optional radar scanner, aerials, infrared camera, TV Dome etc (optional hydraulic operation).
- Optional bimini.
- Optional crane to lower RIB/dinghy.

EQUIPMENT

• Main engines

- Twin MAN R6-800hp common rail diesel engines.
- Fitted with monitoring and diagnostic system.
- Engines may be upgraded to twin MAN V-8 1200hp developing 1200 bhp at 2300rpm.

Gearboxes

- TwinDisc 5114a gearboxes

Steering

- Hydraulic steering mechanism to lower and flybridge helm positions

Thrusters

- Hydraulic tunnel 2 speed 230KGF bow thruster with controls at both lower and upper helm and aft cockpit station.
- Optional variable speed hydraulic bow and stern thruster.

Stern gear

- Fixed pitch propellers driven by solid shafts in cutlass bearings.
- Traditional simple packed stern glands for safety and reliability.

Generator and Shorepower

- Fisher Panda AGT 6000 6kW 24V DC with 3 x 3kW Victron inverters.
- 32amp shorepower system supplied with 20m of shore cable.

Battery Charger and Batteries

- Victron 80 amp / 24V.
- Starboard engine 2 off 165AGM, Port engine/domestic supply 4 off 165AGM

Fuel system

HARDY 62

- 2 day tanks and 2 reserve tanks with fuel transfer and filtration between tanks.
- Tank tender monitoring of fuel and water tanks.

Heating system

- Eberspacher Hydronic 10kW diesel-fired boiler circulating hot water to controllable units in each cabin, galley, saloon and heated towel rails. The hot water calorifier is also heated.
- Forward and front side wheelhouse windows are electrically heated for de-misting.
- Optional forced ventilation for wheelhouse and saloon when in closed condition.
- Optional Dometic air conditioning system throughout.

Water system

- 24v DC pressurized hot and cold water system with a 100 lt calorifer with coils from starboard engine and diesel water heater plus 2kW 240V immersion heater.
- Optional water maker.

Sewage system

- approx. 300 lt holding tank with Offshore Systems electrical gauge system. 2 x Vetus 24v electric macerator pump overboard plus deck suction pump-out facility.
- 3 main cabins with Jabsco electric fresh water flush toilets and crew cabin with Jabsco electric toilet with dedicated holding tank.

Grey water system

- Showers and basins in all heads are piped to mini sump tanks with automatic electric pump-out overboard.

Bilge system

- Comprehensive 4 compartment bilge pumping system with automatic sensors. Visual and audible alarms at both helm stations.
- There is an additional stripping pump in the engine space bilge with an automatic sensor.
- For emergencies there is are two hand bilge pumps with an extended suction hose to ensure coverage of all 4 compartment.

Navigation equipment

Lower helm

- 1 x Simrad 15" monitor.
- 1 x Simrad OP40 Controller.
- 2 x Simrad IS40 Instruments.
- 1 x Simrad OP10 Autopilot controller.
- 1 x Simrad SD card reader.
- 1 x Simrad RS87 VHF.
- Magnetic compass.

Upper Helm

- 1 x Simrad 15" monitors.
- 1 x Simrad OP40 Controller.
- 1 x Simrad OP10 Autopilot controller.
- 1 x Simrad RS87 second station VHF.
- Magnetic compass.

Entertainment

- 32" LCD TV mounted on electrical lift in saloon.
- Stereo/DVD player in saloon including remote control with speakers in helm position and deckhouse.
- FM stereo inc. mp3 and Bluetooth input with remote control and waterproof speakers in flybridge.

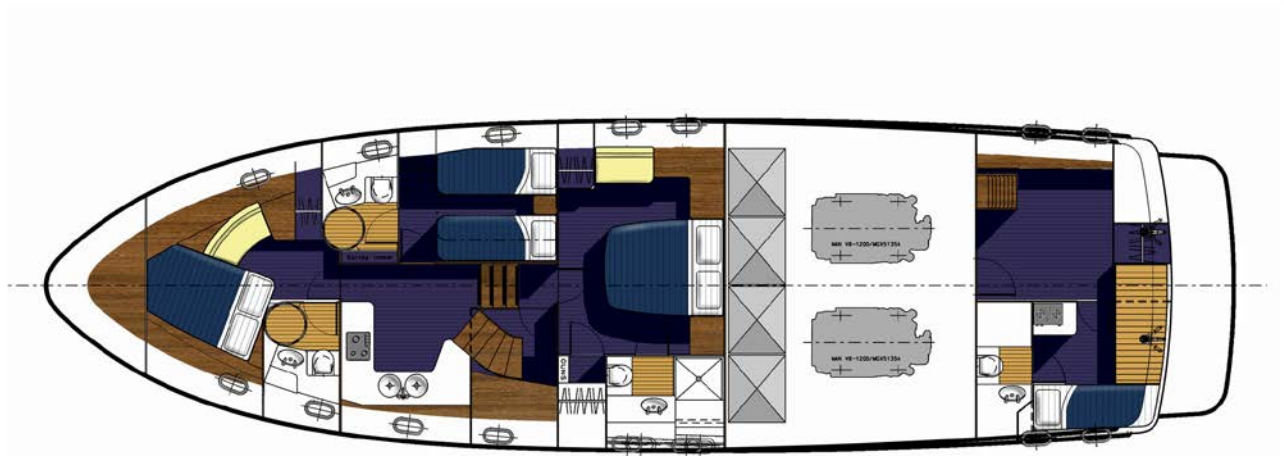
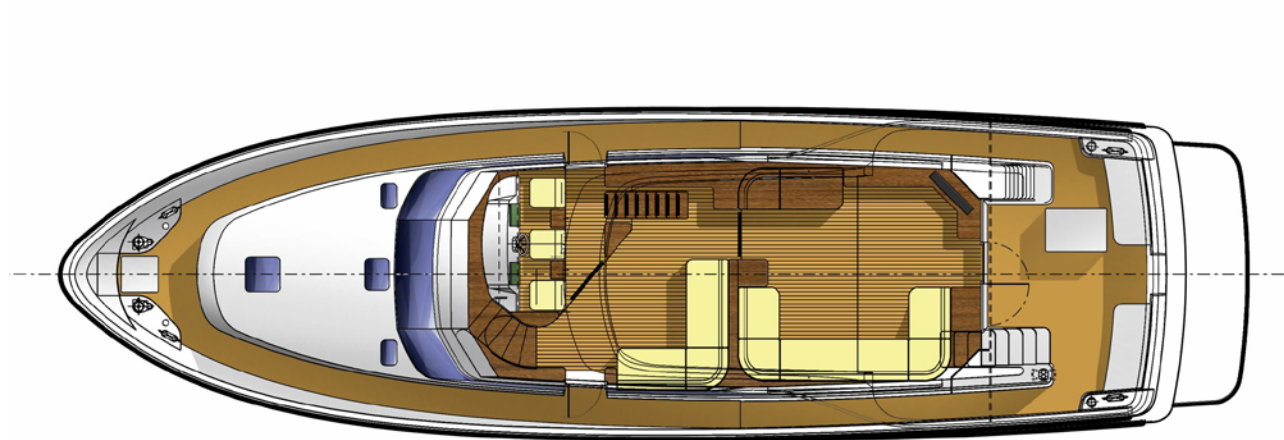
HARDY 62

Lighting

- Main lighting is provided by halogen lights throughout..
- Each berth has its own bulkhead reading light
- Engine and service area lit bt fluorescent and LED lights.

General

- 8 man Solas B liferaft.
- Crockery and cutlery for 8 settings.
- Wine glasses and tumblers for 8 settings.
- 2 Perry bouys with light and lines.
- Fire blanket, fire extinguishers throughout and auto fire extinguisher in engine room.
- Echo max radar reflector fitted on mast.
- Fenders, fenderlines and mooring lines supplied



These are preliminary sales details and are subject to change without notice. As with any Hardy the specification can where practicable, be changed to suit individual requirements.